

Historic, archived document

Do not assume content reflects current scientific knowledge, policies, or practices.

Tongass National Forest Land Management Plan Revision

THEME

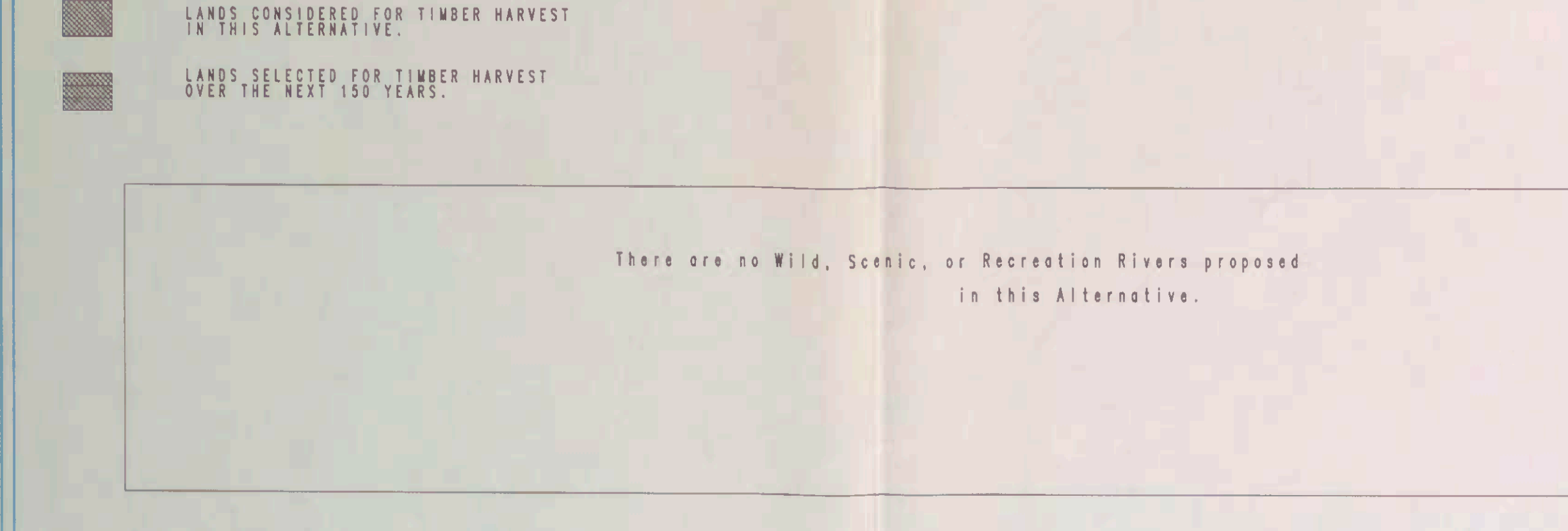
The theme of this alternative is to continue the land allocation, resource analysis and activities, and management direction of the current Tongass Land Management Plan (approved in 1979 and amended in 1985). Timber harvest levels that contribute to maintaining local employment are emphasized, along with maintaining the variety of recreation opportunities and scenic quality currently available. Opportunities for local residents to pursue traditional lifestyles, including subsistence use and recreation, will continue.

ALTERNATIVE C

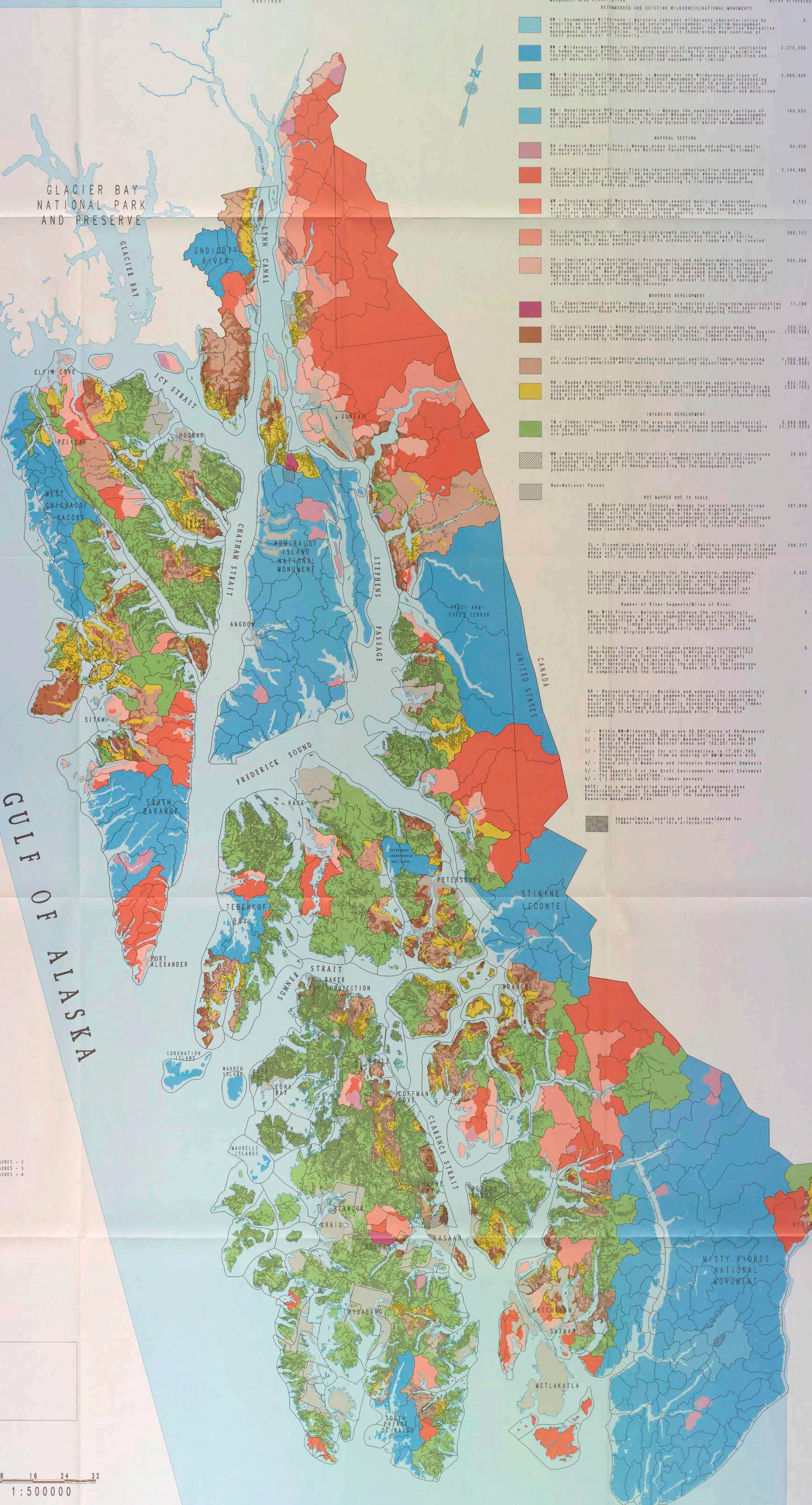
Direction Comes to All Management Areas
All management areas provide for the collection of reasonable access to subsistence and traditional wildlife transportation by road facilities.
All management areas are open to mineral exploration and development with all exceptions: Research Natural Areas, and Selected National Monuments.
Management Area Prescription

| Management Area Prescription | Acres Allocated |
|--|-----------------|
| RECOMMENDED AND EXISTING WILDERNESS/NATIONAL MONUMENTS | |
| RW - Recommended Wilderness - Maintain inherent wilderness characteristics by excluding all activities except those specifically permitted by the management area prescription. Scientific and primitive recreation opportunities are permitted. No timber harvest is allowed. | 0 |
| WW - Wilderness - Manage for the preservation of areas essentially unaffected by human use that provide outstanding opportunities for scientific and primitive recreation. No timber harvest or use of mechanical transport and motorized equipment is allowed. | 2,373,569 1/2 |
| NW - Wilderness National Monument - Manage for the Wilderness portion of Admiralty Island and Wrangell Island National Monuments that provide outstanding opportunities for scientific and primitive recreation and to protect outstanding geological, cultural, and historical resources. No timber harvest or use of mechanical transport and motorized equipment is allowed. | 3,086,448 2/3 |
| NM - Non-Wilderness National Monument - Manage the non-wilderness portions of Admiralty Island and Wrangell Island National Monuments to provide outstanding opportunities for scientific and primitive recreation and to protect outstanding geological, cultural, and historical resources. No timber harvest or use of mechanical transport and motorized equipment is allowed. | 163,033 |
| NATURAL SETTING | |
| RA - Research Natural Area - Manage areas for research and education and/or to maintain diversity in National Forest System lands. No timber harvest will occur. | 84,010 1/2 |
| PR - Primitive Recreation - Provide recreation opportunities and experiences outside Wilderness. In annual fire management plans, provide for the development of fire management plans that include the opportunity for independence and disease control. Roads are absent. | 3,144,880 |
| EW - Excepted Municipal Watershed - Manage excepted municipal watersheds to meet State Water Quality Standards and restricted fish and wildlife harvesting activities which safeguard the quantity and quality of water. Roads are absent. | 9,733 |
| OG - Old-Growth Habitat - Maintain old-growth conifer habitat in its natural condition for scientific and primitive recreation. No timber harvest will be allowed. | 585,737 |
| SP - Semi-Primitive Recreation - Provide motorized and non-motorized recreation opportunities in natural and historical settings. Management areas where recreation is high. When present, roads are low and road use is limited to the management area. No timber harvest or use of mechanical transport and motorized equipment is allowed. | 634,386 |
| MODERATE DEVELOPMENT | |
| EF - Experimental Forests - Manage to provide a variety of long-term opportunities for forest research and demonstration. Timber harvesting will occur only for these purposes. | 17,169 |
| SV - Scenic Viewshed - Manage activities so they are not obvious when the landscape is viewed from public or private lands. Recreation is allowed. Popular roads are limited by the landscape. Timber harvesting is allowed. | 330,316 4/5 |
| VT - Visual-Timber - Emphasize maintaining scenic quality. Timber harvesting and roads are permitted while meeting visual quality objectives of the area. | 1,306,842 6/7 |
| RN - Roaded Natural/Rural Recreation - Provide recreation opportunities associated with motorized and non-motorized activities generally accessible by road. Roads are permitted. Timber harvesting is allowed. Roads are permitted. | 332,102 6/7 |
| INTENSIVE DEVELOPMENT | |
| TP - Timber Production - Manage the area to produce and promote industrial wood production. Roads are permitted. Timber harvesting is allowed. | 1,388,689 5/7 |
| MM - Minerals - Encourage the exploration and development of mineral resources in areas where mineral resources are known to exist. Management areas are designated for mineral resources. Management areas are designated for mineral resources. | 28,853 2/3 |
| Non-National Forest | |
| NOT MAPPED DUE TO SCALE | |
| BF - Beach Fringe and Estuary - Manage for natural beach fringe and estuary habitats, including wetland and riparian habitat. | 187,849 |
| SL - Stream and Lake Protection - 4/ - Maintain or enhance fish and other riparian-dependent resources. Timber harvesting is allowed. | 288,717 5/7 |
| SA - Special Areas - Provide for the inventory, maintenance, interpretation, and protection of areas with archaeological, historical, or scientific value. No timber harvest is allowed. | 6,201 |
| WR - Wild Rivers - Maintain and enhance the outstandingly rare and unique river segments which qualify for listing as Wild Rivers. No timber harvest is allowed. | 0 |
| SR - Scenic Rivers - Maintain and enhance the outstandingly rare and unique river segments which qualify for listing as Scenic Rivers. No timber harvest is allowed. | 0 |
| RR - Recreation Rivers - Maintain and enhance the outstandingly rare and unique river segments which qualify for listing as Recreation Rivers. No timber harvest is allowed. | 0 |

C



GULF OF ALASKA



Number of River Segments/ Miles of River

- WR - Wild Rivers - 0
- SR - Scenic Rivers - 0
- RR - Recreation Rivers - 0

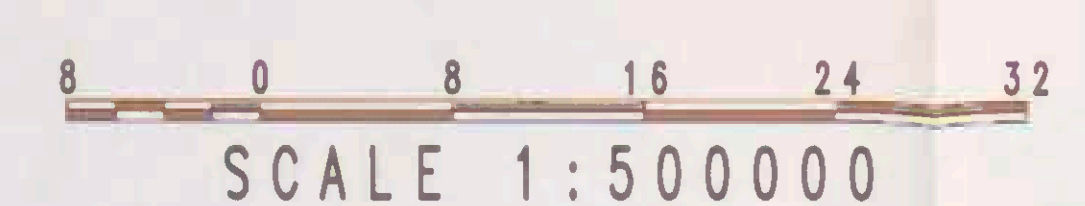
Notes:

- 1 - Within RW-Wilderness, there are 35,893 acres of RA-Research Natural Areas and 228,280 acres of SP-Semi-Primitive Recreation.
- 2 - Within NW-Wilderness National Monument, there are 85,849 acres of RA-Research Natural Areas and 152,000 acres of SP-Semi-Primitive Recreation.
- 3 - Total forest acreage for all alternatives is 17,201,745.
- 4 - Discrepancy in total forest acreage is due to overlap of management areas with other forest lands.
- 5 - See Appendix E of the Draft Environmental Impact Statement for specific landings.
- 6 - 1/3 Acres suitable for timber harvest.

NOTE: For a more detailed description of Management Area Prescriptions, see the Appendix for the Tongass Land and Resource Management Plan.



USDA FOREST SERVICE
ALASKA REGION



CREATED USING MAP 142-AML

DRAFT - JUNE, 1990